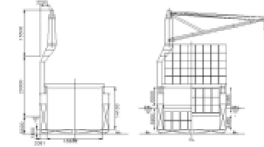
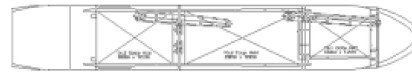
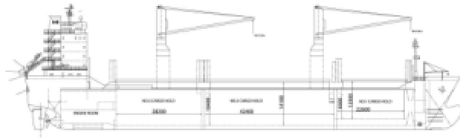




A Class



Ship Basic Information

Builders	NEW CENTURY SHIPYARD
Type	Highest Ice Class (upto 8.70m draft) Double Hull Box-shaped Multi Purpose Tweendeck/Container Carrier
Flag	Cyprus
Port of registry	Limassol
Classification	GL + 100 A5, E3, G, General Cargo strengthened for heavy cargoes, equipped for carriage of containers, + MC E3 AUT. SOLAS II-2 Reg.54 Dangerous goods

Vessel Specific Information

	IMO No.	Year of Built	Summer Deadweight (mt)	Lightweight (mt)
ATLANTIC PIONEER	9190080	1999	17,451	6,808
ONEGO POWER	9190119	2000	17,451	6,808
ATLANTIC PATRIOT	9223904	2003	17,472	6,788

Dimension and Main Data

Length o. a.	143.15 m
Length b.p.	133.00 m
Breadth max.	23.13 m
Depth to maindeck	13.30 m
Deadweight summer	17,530.6 mt
Deadweight winter	16,934.7 mt
Deadweight tropical	18,125.6 mt
Deadweight tropical fresh water	18,115.6 mt
Draft design/max	8.3 m / 9.72 m
Draft winter	9.524 m
Draft tropical	9.929 m
Draft tropical fresh water	10.130 m
Speed at designed draft (8.3 m)	abt 15.5 kn (Bf 2)
Speed at max draft (9.72 m):	abt 15.0 kn (Bf 2)
ST.LAWRENCE	YES
BOWTHRUSTER	YES
CEMENT HOLE FITTED	YES (900mm Diameter)
GT	12,993
NT	5,894
Crew Complement	22

Tank Capacity

HFO	1,526 cbm at 98%
MDO	145 cbm at 98%
Freshwater	335.5 cbm at 100%
Waterballast	5,809 cbm at 100%
Hatchcovers	MacGREGOR hydraulic folding
Number of holds, Hatches	3 holds, 3 hatches
Hold dimensions(LxBxH)	No. 1: 22.60 x 13.25 x 11.8 m No. 2: 42.36 x 18.60 x 13.9 m No. 3: 28.20 x 18.60 x 13.9 m

All holds mechanically ventilated : Hold #1 7 air changes per hour, Holds #2 & #3 6 air changes per
 Flush double skin sides & flush double skin bulkheads with 2 heights fixed rows of recessed lashing eyes.
 All holds with flush container sockets on tanktop and tweendeck.
 Timber stanchions 6 m high
 Hatch dimensions
 No. 1: 20.50 m x 13.21 m
 No. 2: 38.80 m x 18.60 m
 No. 3: 26.20 m x 18.60 m
 Weatherdeck h/covers provide one even surface fm fwd no 1 to aft no 3 hold - 1600m2
 Tweendeck (lift-away type) all panels stowed in front of superstructure, with 20' container on top. Vertical positioning in hold possible every 20ft (TEU) section, usable as grain and separation bulkhead. 4.7mt/m2 Payload.

Tanktop Strength	20.00 mt/sqm			
Capacity (cbf)		Grain		Bale
No. 1	126,232		126,232	
No. 2	384,025		384,025	
No. 3	255,999		255,999	
Total	766,256		766,256	
Container Capacity		20'	30'	40'
On Deck	710	237	311 (+37 TEU)	147
In Hold	408		193 (+22 TEU)	
Total	1,118	237	504 (+59 TEU)	147
Gear				
Vessels 1 & 2	Crane 1 (Holds 1&2)	SWL 57 mt x 32 m at 28 m outreach		
	Crane 2 (Holds 2&3)	SWL 57 mt x 32 m at 28 m outreach		
		Combinable SWL 114 mt		
Vessels 3 & 4	Crane 1 (Holds 1&2)	SWL 45 mt x 32 m at 28 m outreach		
	Crane 2 (Holds 2&3)	SWL 45 mt x 32 m at 28 m outreach		
		Combinable SWL 90 mt		
Vessels 5 & 6	Crane 1 (Holds 1&2)	SWL 60 mt x 32 m at 28 m outreach		
	Crane 2 (Holds 2&3)	SWL 60 mt x 32 m at 28 m outreach		
		Combinable SWL 120 mt		
2 Haeggglunds/Sweden hydr fast cranes combineable				
Deck Machinery: 7 low pressure autotension winches. Original Ulstein Norway.				
Machinery		Main engine		
Type	MAN B&W 7L42MC fixed pitch propeller			
Power	6,965KW/176 RPM			
Grade fuel used:	IFO 380			
		Auxillary engine		
Type	MAN Holeby 5L16/24			
Number	3			
Power	500KW/1,200 rpm			
Grade fuel used	IFO 380			
Generator	475 KW, 450 V, 60 Hz			
Bowthruster	Kawasaki 500 kw CPP			
Fuel consumption at a speed of about 15.5 kn at design draft (Bf 2)				
Ship at sea:	about 28 mt IFO 380			
	about 2.0 mt IFO 380			
Ship in port:	about 2.0 mt (idle)			
	about 4.0 mt (all cranes working)			
Boiler fuel consumption	about 1.0 mt IFO 380 in port			
Navigation and communication equipment				
Central aut tel station	GPS 2 x DGPS/LORAN			
Public addressor	Anemometer & Anemoscope			
Engine telegraph	Radiotelegraph, + HF/MF TLX			
Bridge wing control	VHF Radiotelephone			
Rudder angle navigator	Navtex			
Magnetic compass	INMARSAT B & C			
Gyro compass & Autopilot	Fax			
Echo sounder				
Doppler speed log				
ARPA radars(1x Xband,1xSband)				
ECDIS, and integrated Navigation System				
All details to be considered as about, given in good faith but without any guarantee.				

Email: mail@intership-cyprus.com

Phone: +357 25 584000

Fax: +357 25 585756