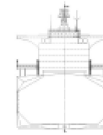
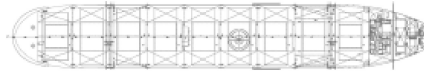




**K Class**



**Ship Basic Information**

Builders	New Times Ship Building, Jing Jiang, China
1. DHL PACIFIC	09/2010
2. MV PERCIVAL	11/2010
Type	Cape Size Bulk Carrier
Flag	Cyprus
Port of registry	Limassol
Classification	GL + 100 A5 Bulk Carrier, BC-A, CSR, ESP, EP, GRAB (20), (HOLD 2,4,6 and 8 may be empty), BWM, IW, DBC +MC AUT

**Vessel Specific Information**

	IMO No.	Year of Built	Summer Deadweight (mt)	Lightweight (mt)
LANCELOT	9587350	2010	177,048.8	27,381.8
MV PERCIVAL	9587362	2010	178,065.8	27,364.5

**Dimension and Main Data**

Length o. a.	291.80 m
Length b.p.	282.20 m
Breadth max.	45.00 m
Depth to maindeck	24.75 m
Deadweight summer	177,048.8 mt
Deadweight winter	172,420.5 mt
Deadweight tropical	181,684.5 mt
Deadweight tropical fresh water	186,811.2 mt
Design Draft	16.500 m
Draft summer (SCANTLING)	18.420 m
Draft winter	18.037 m
Draft tropical	18.803 m
Draft tropical fresh water	19.226 m
Speed	about 14.5 kn (Bft. 2)
ST.LAWRENCE	NO
BOWTHRUSTER	NO
CEMENT HOLE FITTED	YES (900mm Diameter)
GT	92,053
NT	60,938
Crew Complement	36 according to life saving plan

**Tank Capacity**

Fuel IFO 380	4,789 cbm (at 100%)
MDO	393 cbm (at 100%)
Freshwater	560 cbm (at 100%)
Waterballast	52,643 cbm (at 100%)
Hatchcovers	MacGREGOR ELECTRO HYDRAULIC SIDE ROLLING
Number of holds, Hatches	9 holds, 9 hatches, with hopper + Topside tanks
Tank Top dimensions(LxB)	No. 1: 14.20 m x 21.80m, 8.90 m No. 2: 14.80 m x 21.80 m No. 3: 15.30 m x 21.80 m No. 4: 14.80 m x 21.80 m No. 5: 14.00 m x 21.80 m No. 6: 14.00 m x 21.80 m No. 7: 14.80 m x 21.80 m No. 8: 15.40 m x 21.80 m, 16.80 m No. 9: 16.60 m x 15.60 m, 8.40 m

Hatch dimensions	No. 1: 15.64 m x 16.50 m	
	No. 2: 15.64 m x 20.00 m	
	No. 3: 15.64 m x 20.00 m	
	No. 4: 15.64 m x 20.00 m	
	No. 5: 15.64 m x 20.00 m	
	No. 6: 15.64 m x 20.00 m	
	No. 7: 15.64 m x 20.00 m	
	No. 8: 15.64 m x 20.00 m	
	No. 9: 15.64 m x 16.50 m	
All holds natural ventilated		
Tweendeck	No	
Tanktop Strength	21.00 mt/sqm (cargo holds #2,4,6,8)	35.00 mt/sqm (cargo holds #1,3,5,7,9)
<b>Capacity (cbm,cbf) Grain (cbm) Grain (cbf)</b>		
No. 1	18,876	666,705
No. 2	22,643	799,672
No. 3	23,491	829,620
No. 4	22,671	800,660
No. 5	22,671	800,660
No. 6	22,671	800,660
No. 7	22,687	801,225
No. 8	22,899	808,713
No. 9	19,633	693,369
<b>Total</b>	<b>198,244</b>	<b>7,001,284</b>
<b>Machinery Main engine</b>		
Type	Hyundai MAN B&W 6570 MC MARK VI	
Power	16,860KW/91 RPM	
Grade fuel used:	Heavy F.O. up to 380cst	
<b>Auxillary engine</b>		
Type	Yanmar - 6N21AL-EV	
Number	3	
Power	970KW /900 rpm	
Grade fuel used	IFO 380	
Generator	900 KW, 450 V, 60 Hz	
	1 Emergency generator 180KW	
<b>Fuel consumption at a speed of about 14.5 kn (Bf 2)</b>		
Ship at sea:	about 58.0 mt IFO 380	
	about 3.5 mt IFO 380 (without ballast pumps)	
Ship in port:	about 1.5 mt IFO 380 without ballast pumps	
Boiler fuel consumption	about 1.5 mt IFO in port	
<b>Navigation and communication equipment</b>		
- 2 Arpa radars + 1 Bow Radar	- full GMDSS fitted	
- SATCOM Fleet Broadband 500 + C	- Navtex Receiver	
- gyro compass/autopilot	- fax	
- MF/HF transmitter/receiver	- Doppler log	
- VHF radiotelephones	- navigational echosounder	
- 3 portable VHF	with digital depthsouder	
- GPS Receiver	- ECDIS & Integrated Navigation System	
- DGPS Receiver		
- watchkeeping receiver	- vessel (DHL PACIFIC) has a full training bridge and training engine simulator (MV PERCIVAL)	
- chart receiver		
All details to be considered as about, given in good faith but without any guarantee.		

Email: mail@intership-cyprus.com  
Phone: +357 25 584000  
Fax: +357 25 585756