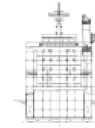
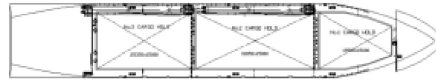
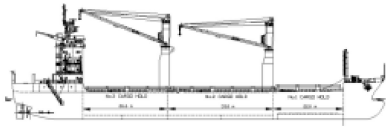




MCP Class



Ship Basic Information

Builders	Shandong Huanghai Shipbuilding
Delivery	2007-2009
Type	Container Feeder Vessels
Manager	InterShip Navigation Co. Ltd. / Hartmann Rederei GmbH / Feederlines B.V.
Flag	Cyprus
Port of registry	Limassol
Classification	CCS * CSA General Dry Cargo Ship/Equipped with container securing Apartment, Strengthened for heavy cargos, Ice Class B Solas II-2 REG 19 * CSM

Vessel Specific Information

	IMO No.	Year of Built	Summer Deadweight (mt)	Lightweight (mt)
KOTA MATADI	9371933	2007	7,709.0	3,389.0
MCP LARNACA	9393498	2007	7,709.0	3,389.0
MCP KYRENIA	9393503	2007	7,709.0	3,389.0
MCP FAMAGUSTA	9371971	2008	7,709.0	3,389.0
MCP PAPHOS	9555436	2009	7,709.5	3,420.2
MCP PACHNA	9566679	2009	7,734.4	3,395.0
MCP TROODOS	9356907	2007	7,708.0	3,391.5
SOUNI	9371969	2007	7,852.0	3,430.0

Dimension and Main Data

Length o. a.	117.00 m
Length b.p.	110.00 m
Breadth max.	19.70 m
Depth to maindeck	8.50 m
Deadweight summer (geared)	about. 7,708 mt dwat at abt. 6.45 m draft
Deadweight summer (non geared)	about. 8,024 mt dwat at abt. 6.45 m draft
Draft summer	abt 6.46 m
Design draft	6.40 m
Speed	about 15 knots at design draft (Bf 2)
CEMENT HOLE FITTED	YES (900mm Diameter)
GT	abt 5,652
NT	abt 2,687
Crew Complement	20

Tank Capacity

Fuel IFO 180	abt. 386 cbm (at 100%)
Diesel Oil	abt. 235 cbm (at 100%)
Freshwater	abt. 163 cbm
Waterballast	abt. 3,915 cbm
Hatchcovers	MacGREGOR original MacSTACK system, non-sequential opening possible
Number of holds, Hatches	3 holds, 3 hatches
Hold dimensions(LxBxH)	No. 1: abt. 22.10 m x abt. 15.00 m (narrowing fore to abt. 6.60m) x abt. 8.30/8.35m No. 2: abt 33.15 m x abt 15.00 mx abt 8.40 m No. 3: abt. 26.65 m x abt. 15.00 m (narrowing aft to abt. 6.60m) x abt. 8.40/7.20 m
All holds mechanically ventilated / 6 air changes per hour	

Container capacity (geared)

	20'	OR
No. 1	42 TEU	15 FEU + 9 TEU
No. 2	90 TEU	36 FEU + 18 TEU
No. 3	68 TEU	34 FEU + 0 TEU
Deck, Hatch No.1	57 TEU	18 FEU + 21 TEU
Deck, Hatch No.2	154 TEU	63 FEU + 27 TEU
Deck, Hatch No.3	139 TEU	67 FEU + 5 TEU

