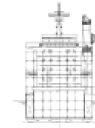
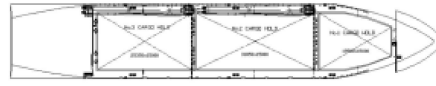
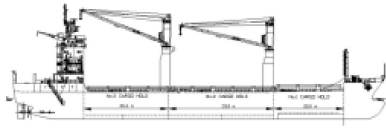




**MCP Class**



**Ship Basic Information**

Builders	Shandong Huanghai Shipbuilding
Delivery	2007-2009
Type	Container Feeder Vessels
Manager	Intership Navigation Co. Ltd.
Flag	Cyprus, Liberia
Port of registry	Limassol, Monrovia
Classification	CCS * CSA General Dry Cargo Ship/Equipped with container securing Appartment, Strengthened for heavy cargos, Ice Class B Solas II-2 REG 19 * CSM

**Vessel Specific Information**

	IMO No.	Year of Built	Summer Deadweight (mt)	Lightweight (mt)	Flag
MCP NICOSIA	9371933	2007	7,709.0	3,389.0	Cyprus
MCP LARNACA	9393498	2007	7,709.0	3,389.0	Cyprus
MCP KYRENIA	9393503	2007	7,709.0	3,389.0	Cyprus
MCP FAMAGUSTA	9371971	2008	7,709.0	3,389.0	Cyprus
MCP PAPHOS	9555436	2009	7,709.5	3,420.2	Cyprus
MCP PACHNA	9566679	2009	7,734.4	3,395.0	Cyprus
ANTUNG	9356907	2007	7,708.0	3,391.5	Cyprus
SOUNI	9371969	2007	7,852.0	3,430.0	Liberia

**Dimension and Main Data**

Length o. a.	117.00 m
Length b.p.	110.00 m
Breadth max.	19.70 m
Depth to maindeck	8.50 m
Deadweight summer (geared)	about. 7,708 mt dwt at abt. 6.45 m draft
Deadweight summer (non geared)	about. 8,024 mt dwt at abt. 6.45 m draft
Draft summer	abt 6.46 m
Design draft	6.40 m
Speed	about 15 knots at design draft (Bf 2)
CEMENT HOLE FITTED	YES (900mm Diameter)
GT	abt 5,652
NT	abt 2,687
Crew Complement	20

**Tank Capacity**

Fuel IFO 180	abt. 386 cbm (at 100%)
Diesel Oil	abt. 235 cbm (at 100%)
Freshwater	abt. 163 cbm
Waterballast	abt. 3,915 cbm
Hatchcovers	MacGREGOR original MacSTACK system, non-sequential opening possible
Number of holds, Hatches	3 holds, 3 hatches
Hold dimensions(LxBxH)	No. 1: abt. 22.10 m x abt. 15.00 m ( narrowing fore to abt. 6.60m) x abt. 8.30/8.35m No. 2: abt 33.15 m x abt 15.00 mx abt 8.40 m No. 3: abt. 26.65 m x abt. 15.00 m (narrowing aft to abt. 6.60m) x abt. 8.40/7.20 m
All holds mechanically ventilated / 6 air changes per hour	

**Container capacity (geared)**

	20'	OR
No. 1	42 TEU	15 FEU + 9 TEU
No. 2	90 TEU	36 FEU + 18 TEU
No. 3	68 TEU	34 FEU + 0 TEU
Deck, Hatch No.1	57 TEU	18 FEU + 21 TEU
Deck, Hatch No.2	154 TEU	63 FEU + 27 TEU
Deck, Hatch No.3	139 TEU	67 FEU + 5 TEU

Deck, Aft of s/structure	68 TEU	32 FEU + 4 TEU
<b>Total</b>	<b>618 TEU</b>	<b>265 FEU + 84TEU</b>
<b>Container capacity (non geared)</b>		
	20'	OR
No. 1	42 TEU	15 FEU + 9 TEU
No. 2	90 TEU	36 FEU + 18 TEU
No. 3	68 TEU	34 FEU + 0 TEU
Deck, Hatch No.1	57 TEU	18 FEU + 21 TEU
Deck, Hatch No.2	160 TEU	64 FEU + 31 TEU
Deck, Hatch No.3	144 TEU	72 FEU + 0 TEU
Deck, Aft of s/structure	68 TEU	32 FEU + 4 TEU
<b>Total</b>	<b>629 TEU</b>	<b>271 FEU + 84TEU</b>
<b>Capacity (cbf)</b>		
	<b>Grain</b>	<b>Bale</b>
No. 1	abt. 79,285 cbf	abt. 77,202 cbf
No. 2	abt. 145,292 cbf	abt. 142,361 cbf
No. 3	abt. 112,377 cbf	abt. 113,189 cbf
<b>Total</b>	<b>abt. 336,954 cbf</b>	<b>abt. 332,752 cbf</b>
Reefer Plugs	60 pcs Type:S-L0336AN-3h (Mitsubishi design), 32A, 440V, 60 Hz, pole 3P+E, earth 3 o'clock position	
<b>Gear: (on geared vessels)</b>		
Crane 1 (Hold 1&2):	SWL 40 mt x 28 m at 26.00 m outreach MCP Troodos: SWL 80 mt x 12.5 m and 36 mt x 28 m at 25.00 m outreach	
Crane 2 (Hold 2&3):	SWL 40 mt x 28 m at 26.00 m outreach MCP Troodos: SWL 80 mt x 12.5 m and 36 mt x 28 m at 25.00 m outreach	
Crane 1 & 2 (Hold 2):	combined SWL 80 mt (no traverse on board) MCP Troodos: combined SWL 160 mt (no traverse on board)	
2 Haegglunds electro/hydraulic cranes		
<b>Admissable load</b>		
Tank Top:	17 mt/sqm 60 mt/76.5 mt (TEU/FEU)	
Weather Deck:	Hatch 1: 4.3 mt/sqm	
	Hatch 2 & 3: 3.5 mt/sqm	
<b>Machinery</b>		
Type	2x Daihatsu 8DKM-28L	
Power	2,500KW each	
Grade fuel used:	IFO 180 - RME 180 (ISO 8217-2005)	
<b>Auxillary engine</b>		
Type	Deutz MWM license TBD 234V8	
Number	3	
Power	296 KW each	
Grade fuel used	MGO-DMA (ISO 8217-2005)	
Generator	270 KW, 450 V, 60 Hz	
<b>Fuel consumption at a speed of about 15 kn at design draft (Bf 2)</b>		
Ship at sea:	about 20 mt IFO 180/day	
	about 2.0 mt GO (No reefers connected)	
Ship in port (idle):	about 2.0 mt GO (No reefers connected)	
Eco Consumption with one engine:	about 12.00 mt IFO 180/day about 2.0 mt GO (No reefers connected)	
<b>Navigation and communication equipment</b>		
- 2 Arpa radars	- full GMDSS fitted	
- SATCOM Fleet77 + C	- Navtex Receiver	
- gyro compass/autopilot	- fax	
- MF/HF transmitter/receiver	- Doppler log	
- VHF radiotelephones	- navigational echosounder	
- 3 portable VHF	with digital depthsouder	
- GPS Receiver	- ECDIS & Integrated Navigation System	
- DGPS Receiver		
- watchkeeping receiver		
- chart receiver		
All details to be considered as about, given in good faith but without any guarantee.		