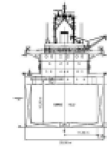
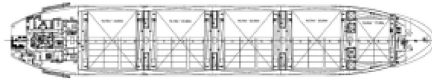
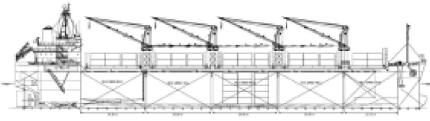




**Super S Class**



**Ship Basic Information**

Builders	Saiki Heavy Industries, Saiki, Japan
Type	Multi-Purpose Box-shaped Bulk Carrier
Flag	Cyprus
Port of registry	Limassol
Classification	DNV-GL 110A5 DBC DG Grab multi-purpose dry cargo ship, BC-A, BC-XII holds n. 2,5 maybe empty + MC

**Vessel Specific Information**

	IMO No.	Year of Built	Summer Deadweight (mt)	Lightweight (mt)
UBC SAGUNTO	9426867	2010	33,313	8,044
UBC SALAVERY	9426881	2010	33,305	8,044

**Dimension and Main Data**

Length o. a.	171.90 m
Length b.p.	165.50 m
Breadth max.	28.00 m
Depth to maindeck	15.00 m
Deadweight summer	33,313 mt
Deadweight winter	32,367 mt
Deadweight tropical	34,259 mt
Deadweight freshwater	33,311 mt
Draft Summer	10.624 m
Draft Winter	10.403 m
Draft Tropical	10.845 m
Draft Tropical Freshwater	11.086 m
Scantling draft	10.60 m
Speed	about 15.00 kn (Bf 2)
ST.LAWRENCE	NO
BOWTHRUSTER	NO
CEMENT HOLE FITTED	YES (900mm Diameter)
GT	21,000
NT	10,927
Crew Complement	30

**Tank Capacity (including day and settling tanks)**

Fuel HFO 380	1,456 cbm (at 100 %)
MDO	172 cbm (at 100 %)
Freshwater	243 cbm
Ballast tanks	12,922 cbm at 100%
Hatchcovers	NAKATA MAK hydraulic folding
Number of holds, Hatches	5 holds, 5 hatches (nos. 1+2+3+4+5 box shaped)
Hold dimensions(LxBxH)	No. 1: 22.12 m x 17.20 m x 15.20 m No. 2: 26.86 m x 23.60 m x 15.20 m No. 3: 26.86 m x 23.60 m x 15.20 m No. 4: 26.86 m x 23.60 m x 15.20 m No. 5: 26.86 m x 23.60 m x 12.40 m
Hatch dimensions	No. 1: 13.43 m x 17.20 m No. 2: 19.75 m x 23.60 m No. 3: 19.75 m x 23.60 m No. 4: 19.75 m x 23.60 m No. 5: 19.75 m x 23.60 m

All holds mechanically ventilated / 4 air changes per hour

Capacity (cbf)	Grain	Bale
No. 1	190,400	187,857
No. 2	336,683	332,865

No. 3	337,954	334,215
No. 4	336,796	333,211
No. 5	280,457	277,986
<b>Total</b>	<b>1,482,290</b>	<b>1,466,134</b>
<b>Gear</b>		
Crane 1 (Hold 1 & 2):	SWL 36 mt x 24 m at 10.0 m outreach	
Crane 2 (Hold 2 & 3):	SWL 36 mt x 24 m at 10.0 m outreach	
Crane 3 (Hold 3 & 4):	SWL 36 mt x 24 m at 10.0 m outreach	
Crane 4 (Hold 4 & 5):	SWL 36 mt x 24 m at 10.0 m outreach	
The vessel has 4 hydraulic cranes which are equipped with motor grabs capacity: 12m <sup>3</sup> -1.8 mt/m <sup>3</sup>		
<b>Machinery</b>		<b>Main engine</b>
Type	MITSUBISHI 6 UEC 45 LSE	
Power	7,470 kw / 130 rpm	
Grade fuel used:	MDO for STARTING/STOPPING/MANOUVERING	
	heavy f.o.up to 380 cst for sea service	
		<b>Auxillary engine</b>
Type	Yanmar 6N18L-EV	
Number	2	
Power	550 KW /720 RPM	
Grade fuel used	IFO/MDO burning	
Generator	500 kw 450 V, 60 Hz, A.C.,720 RPM	
	1 Emergency Generator CATERPILLAR, 250 kW	
<b>Fuel consumption at a speed of about 15.0 kn (Bf 2)</b>		
Ship at sea:	about 26.5 mt IFO 380 at C.S.R.	
	about 2.0 mt IFO 380	
Ship in port:	about 1.0 mt (idle)	
	about 4.0 mt (all cranes working)	
Boiler fuel consumption	about 0.7mt IFO in port	
<b>Navigation and communication equipment</b>		
- 2 Arpa radars	- full GMDSS fitted	
- SATCOM Fleet77 + C	- Navtex Receiver	
- gyro compass/autopilot	- fax	
- MF/HF transmitter/receiver	- Doppler log	
- VHF radiotelephones	- navigational echosounder	
- 3 portable VHF	with digital depthsouder	
- GPS Receiver	- ECDIS & Integrated Navigation System	
- DGPS Receiver		
- watchkeeping receiver		
- chart receiver		
All details to be considered as about, given in good faith but without any guarantee.		

Email: mail@intership-cyprus.com

Phone: +357 25 584000

Fax: +357 25 585756

© Copyrights 2008 InterShip Navigation Co. Ltd. All rights reserved