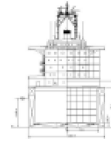
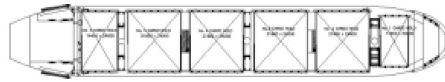
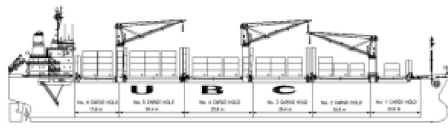




T Class



Ship Basic Information

Builders	Saiki Heavy Industries Saiki, Japan
Type	Double Skinned, open hatch, Multi-purpose dry cargo ship
Flag	Cyprus
Port of registry	Limassol
Classification	100 A5G EP SOLAS-II-2, Reg. 19 DBC C2P54 C1D11, Multi-Purpose Dry Cargo Ship, Equipped for Carriage of Containers, Strengthened, For Heavy Cargo Holds Nos. 1, 2, 3, 4, 5, 6 may be empty.

Vessel Specific Information

	IMO No.	Year of Built	Summer Deadweight (mt)	Lightweight (mt)
UBC TAMPICO	9285354	2004	37,821	9,082
UBC TOKYO	9300752	2005	37,865	9,038
UBC TORONTO	9300764	2005	37,833	9,070
UBC TAMPA	9416707	2009	37,724	9,179
UBC TARRAGONA	9416719	2009	37,707	9,196
UBC TILBURY	9416721	2010	37,702	9,201

Dimension and Main Data

Length o. a.	182.59 m
Length b.p.	174.60 m
Breadth max.	28.60 m
Depth to maindeck	15.00 m
Deadweight winter	36,759 mt
Deadweight tropical	38,886 mt
Deadweight tropical fresh water	38,864 mt
Draft summer	10.870 m
Draft winter	10.644 m
Draft tropical	11.096 m
Draft tropical fresh water	11.345 m
Speed	about 15 kn (at Bft. 2)
ST.LAWRENCE	NO
BOWTHRUSTER	NO
CEMENT HOLE FITTED	YES (900mm Diameter)
GT	24,140
NT	13,402
Crew Complement	30

Tank Capacity

Fuel IFO 380	1,571 cbm (at 96%)
MDO	336 cbm (at 96%)
Freshwater	218 cbm
Waterballast	12,038 cbm
Hatchcovers	NAKATA MAK hydraulic folding
Number of holds, Hatches	6 holds, 6 hatches, flush double skinned / box holds
Hold dimensions(LxBxH)	No. 1: 19.20 m x (12.00 fwd / 20.00 aft) 15.30 m No. 2: 24.80 m x 24.00 m x 15.30 m No. 3: 24.80 m x 24.00 m x 15.30 m No. 4: 24.80 m x 24.00 m x 15.30 m No. 5: 24.80 m x 24.00 m x 15.30 m No. 6: 17.60 m x (24.00 fwd / 10.40aft) 15.30 m
Hatch dimensions	No. 1: 11.20 m x 20.00 m No. 2: 21.60 m x 24.00 m No. 3: 21.60 m x 24.00 m No. 4: 21.60 m x 24.00 m No. 5: 21.60 m x 24.00 m No. 6: 14.40 m x 24.00 m

All holds mechanically ventilated / 4 air changes per hour		
Tweendeck	No	
Capacity (cbf)	Grain	Bale
No. 1	193,169	192,036
No. 2	328,519	326,468
No. 3	328,952	327,972
No. 4	328,381	325,737
No. 5	328,952	327,972
No. 6	216,036	215,413
Total	1,724,009	1,715,598
Gear		
Crane 1 (Hold 1&2):	SWL 36 mt x 26 m at 11.70 outreach	
Crane 2 (Hold 3&4):	SWL 36 mt x 26 m at 11.70 outreach	
Crane 3 (Hold 5&6):	SWL 36 mt x 26 m at 11.70 outreach	
3 hydraulic cranes and 3 Peiner, electro-hydraulic grabs, 12cbm each		
Machinery	Main engine	
Type	MITSUBISHI 6UEC52LS	
Power	7,980KW/120 RPM	
Grade fuel used:	marine diesel oil (MDO) for starting /stopping heavy F.O. up to 380 cst for operation	
	Auxillary engine	
Type	Yanmar - 6N18AL	
Number	2	
Power	550KW /900 rpm	
Grade fuel used	MDO	
Generator	500 KW, 450 V, 60 Hz	
	1 Emergency generator 250KW	
Fuel consumption at a speed of about 15 kn (Bf 2)		
Ship at sea:	about 30.5 mt IFO 380	
	about 1.5 mt MDO	
Ship in port:	about 1.30 mt MDO	
	about 3.00 mt MDO (all cranes working)	
Boiler fuel consumption	about 1.0 mt IFO in port	
Navigation and communication equipment		
- 2 Arpa radars	- full GMDSS fitted	
- SATCOM Fleet77 + C	- Navtex Receiver	
- gyro compass/autopilot	- fax	
- MF/HF transmitter/receiver	- Doppler log	
- VHF radiotelephones	- navigational echosouder	
- 3 portable VHF	with digital depthsouder	
- GPS Receiver	- ECDIS & Integrated Navigation System	
- DGPS Receiver		
- watchkeeping receiver		
- chart receiver		
All details to be considered as about, given in good faith but without any guarantee.		

Email: mail@intership-cyprus.com

Phone: +357 25 584000

Fax: +357 25 585756

© Copyrights 2008 InterShip Navigation Co. Ltd. All rights reserved